

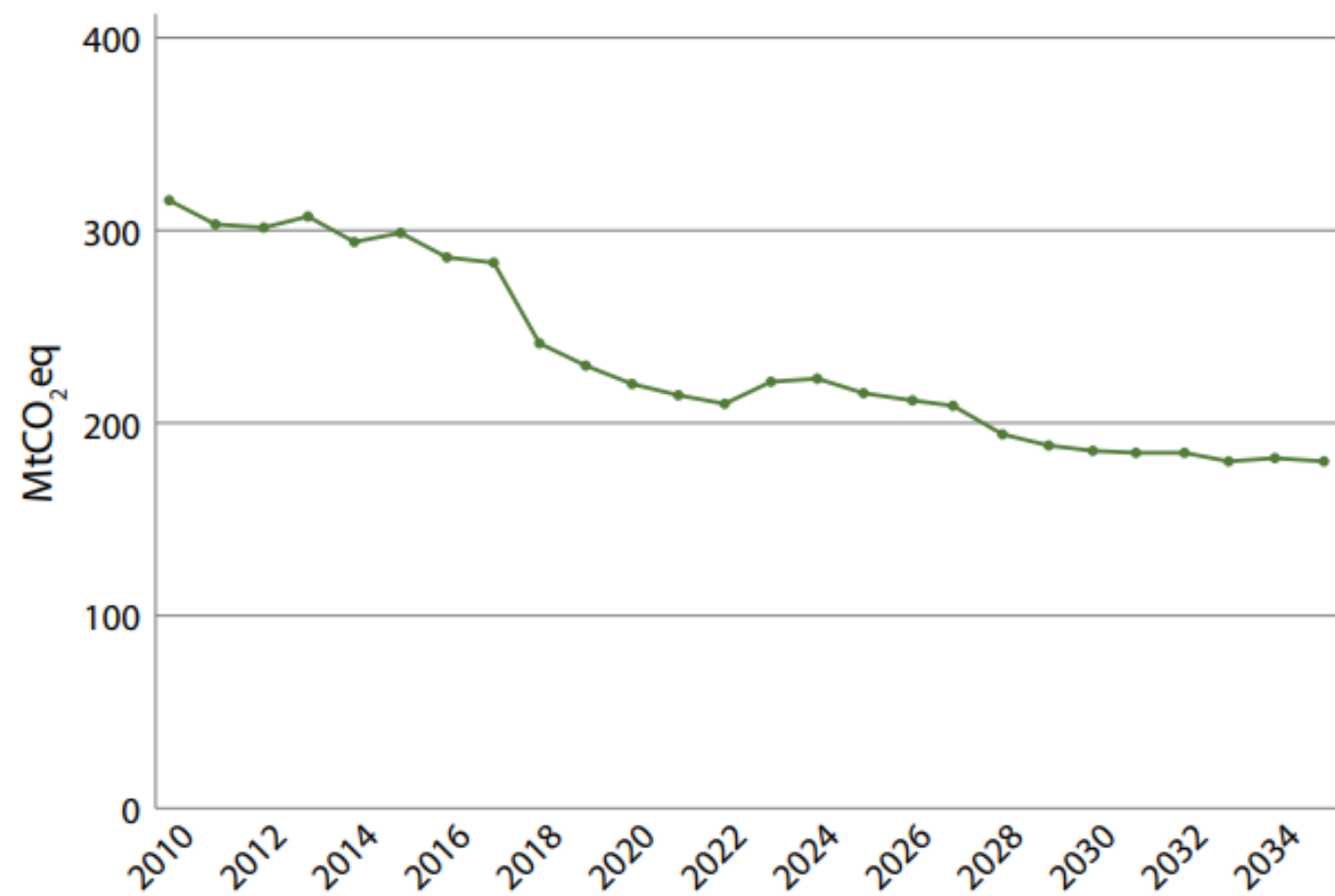
How are European forests doing?: An extremely fast overview

Julia Christian, Campaigns Coordinator, Fern



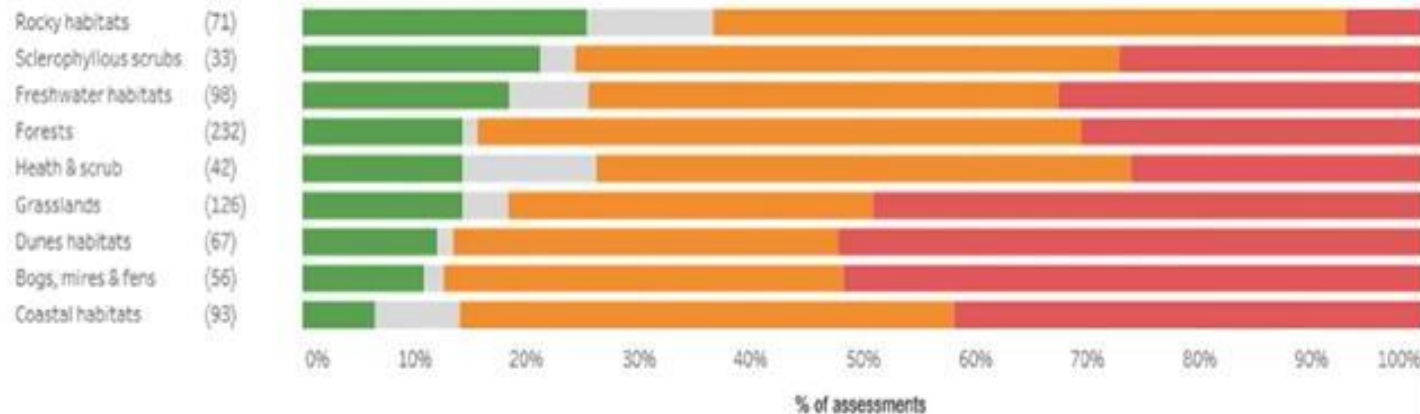
Graph 2. Projected decline in the overall carbon stored in forests and land until 2030

Overall emissions stored by forests and land in millions of tonnes CO_2 equivalent (MtCO_2eq)



Source: European Environment Agency

Conservation status per habitat group



Forests: 14% good, 54% poor, 31% bad



Conservation status of forest species protected by the Habitats Directive:

- 6% improving
- 27% deteriorating

-Source: European Environment Agency

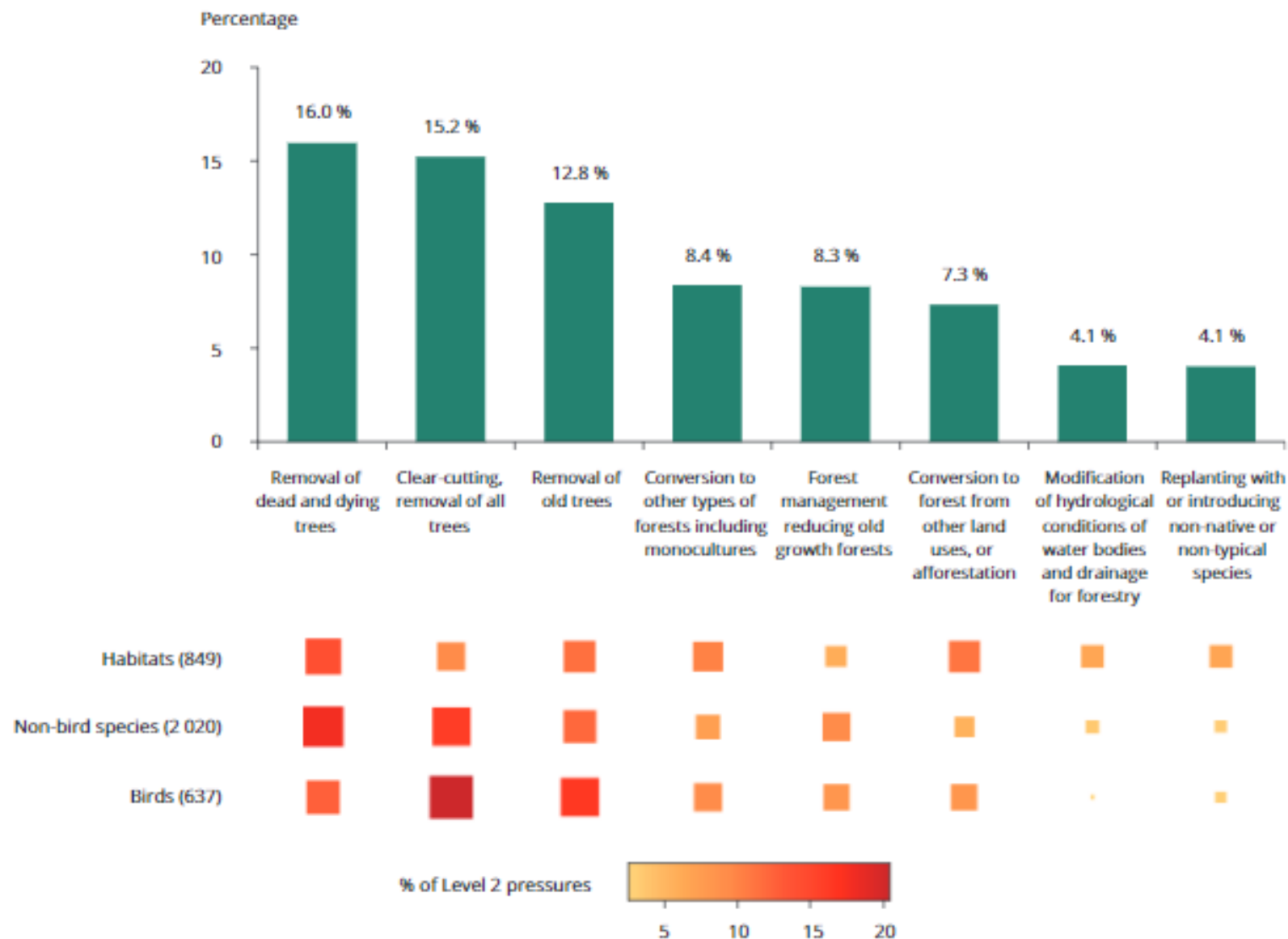
16

Clear-cut in Romania. Photo by Matthias Schickhofer.





Figure 4.5 Distribution of the eight most relevant level 2 forestry pressures for habitats and species, shown as the percentage of pressures within this level 1 group



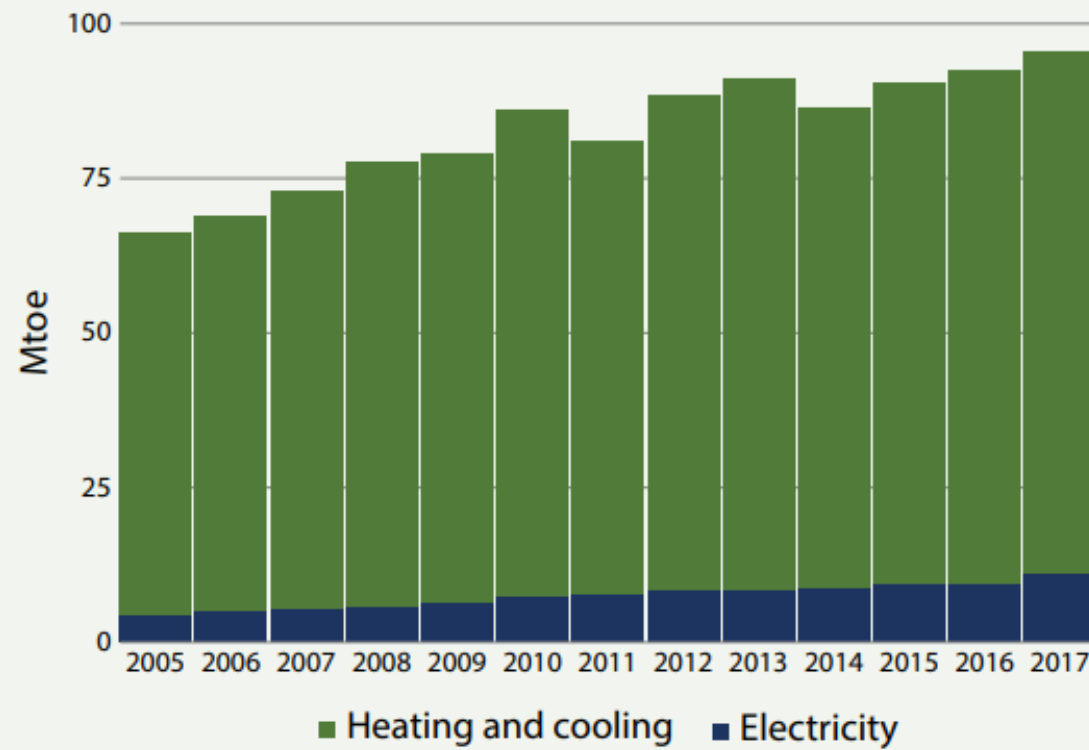
Notes: The size of the squares and their shade reflect the percentage of pressures for each group: bigger darker squares indicate higher percentages. Total number of reports is given in parentheses.

Sources: Article 12 and Article 17 Member States' reports and assessments.

Source: 2020 State of Nature in the EU report

Graph 3. Trends of solid biomass use for energy (heating, cooling and electricity production)

Increase of biomass use in Mtoe due to bioenergy use. The data for solid biomass includes waste categories and thus shows slightly higher numbers than provided in the text.



Source: European Environment Agency



Eesti Looduse Fond @ELFond · 2 Dec

Bioenergy demand from European countries is driving intensive clearcutting in protected forests in Estonia and Latvia.

New report from @LOB_lv and @ELFond out today: elfond.ee/biomassreport

#CutCarbonNotForests #ForestsAreNotFuel



18

9



Logging volumes and woody biomass demand, Estonia 2008-2018

